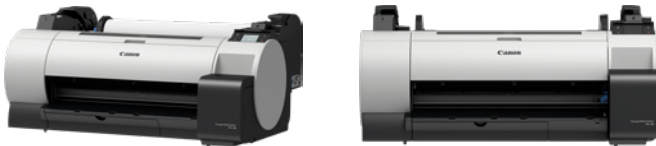


imagePROGRAF  
TA-20

# COMPACT AND INTUITIVE DEVICE FOR HIGH PRINT QUALITY

A versatile and compact multi-purpose printer designed for schools, offices and retail with low volume print jobs.



- **High Print Quality**  
Innovative imaging technology delivers precise printing, with powerful colour from LUCIA TD ink
- **Quiet and compact**  
Seamlessly fits into any office, with reduced operation noise and full front accessibility
- **Accurate ink placement**  
Print sharp lines with an innovative Air Feeding System that keeps paper flat for high accuracy
- **Strengthened security**  
Security requirements and settings for secure communication, secure management and secure interface
- **Ease of use**  
3" inch color LCD touchscreen panel with ample icons for immediate access

## PRODUCT RANGE



imagePROGRAF TA-30



imagePROGRAF TA-20



imagePROGRAF TM-200

**Canon**

---

# TECHNICAL SPECIFICATIONS

# imagePROGRAF TA-20

## TECHNOLOGY

|                            |   |
|----------------------------|---|
| <b>Printer Type</b>        | 5 colors 24"/610mm  |
| <b>Print Technology</b>    | Canon Bubblejet on Demand 6 colours integrated type (6 chips per print head x 1 print head)   |
| <b>Print Resolution</b>    | 2,400 x 1,200 dpi   |
| <b>Number of Nozzles</b>   | 15,360 nozzles (MBK 5,120 nozzles, Other Colors 2,560 nozzles each)   |
| <b>Line Accuracy</b>       | ±0.1% or less<br>User adjustments necessary. Printing environment and media must match those used for the adjustments.<br>CAD paper required: Plain paper, CAD tracing paper, coated paper, CAD translucent matte film only                                       |
| <b>Nozzle Pitch</b>        | 1,200dpi (2 lines)  |
| <b>Ink Droplet Size</b>    | minimum 5 pl per colour   |
| <b>Ink Capacity</b>        | Sales Ink: 55ml<br>Bundled Starter Ink: 55ml (2 x MBK, 1 x BK,C,M,Y)  |
| <b>Ink Type</b>            | Pigment inks - Matte Black, Black, Cyan, Magenta, Yellow  |
| <b>OS Compatibility</b>    | Microsoft Windows 32 Bit: Vista, 7, 8, 8.1, 10<br>Microsoft Windows 64 Bit: Windows 7, 8.1, 10, Windows Server 2008R2, Windows Server 2012/2012R2, Windows Server 2016, Windows Server 2019<br>Apple Macintosh: OS X 10.10.5-OS X 10.11, macOS 10.12- macOS 10.15 |
| <b>Printer Languages</b>   | SG Raster (Swift Graphic Raster),HP-GL/2, HP RTL, JPEG (Ver. JFIF1.02)  |
| <b>Standard Interfaces</b> | USB B Port: Hi-Speed<br>Ethernet: IEEE 802.3 10base-T/IEEE 802.3u 100base-TX/IEEE 802.3ab 1000base-T/IEEE 802.3x Full Duplex<br>Wireless LAN: IEEE802.11n/IEEE802.11g/IEEE802.11b<br>* Please refer to user manual how to activate/deactivate the wireless LAN    |

## MEMORY

|                        |      |
|------------------------|------|
| <b>Standard memory</b> | 2 GB |
| <b>Hard Drive</b>      | NO   |

## PRINT TIME FOR A1 PAGE SIZE

|   |  |                   |                   |
|---|--|-------------------|-------------------|
| <b>Media Type</b>                         |  | <b>Print Mode</b> | <b>Print Time</b> |
| <b>CAD Drawing</b>                        |  |                   |                   |
| <b>Plain Paper (A1 size Portrait)</b>     |  | Fast              | 00:32 min         |
|   |  | Standard          | 00:56 min         |
| <b>Poster</b>                             |  | <b>Print Mode</b> | <b>Print Time</b> |
| <b>Plain Paper (A1 size Portrait)</b>     |  | Fast              | 00:30 min         |
|   |  | Standard          | 00:49 min         |
| <b>Heavy Coated Paper (A1 paper size)</b> |  | <b>Print Mode</b> | <b>Print Time</b> |
|   |  | Fast              | 00:58 min         |
|   |  | Standard          | 01:46 min         |

## MEDIA HANDLING

|                                    |   |
|------------------------------------|---|
| <b>Media Feed and Output</b>       | Roll Paper: One Roll, Upper-loading, Front Output<br>Cut Sheet: Upper-loading, Front Output (Manual feed using media locking lever) |
| <b>Media Width</b>                 | Roll paper: 203.2 - 610 mm<br>Cut sheet: 210 - 431.8 mm   |
| <b>Media Thickness</b>             | Roll/Cut: 0.07 - 0.8 mm   |
| <b>Minimum Printable Length</b>    | Roll paper: 203.2 mm<br>Cut sheet: 279.4 mm   |
| <b>Maximum Printable Length</b>    | Roll paper: 18 m (Varies according to the OS and application)<br>Cut sheet: 594mm   |
| <b>Maximum Media Roll Diameter</b> | 150 mm or less  |
| <b>Media Core Size</b>             | Internal diameter of roll core: 2"/3"(option)   |
| <b>Margins Recommended area</b>    | Roll paper: Top: 20 mm, Bottom: 3 mm, Side: 3 mm<br>Cut sheet: Top: 20 mm, Bottom: 20 mm, Side: 3 mm                                |

## Margins Printable area

Roll paper: Top: 3 mm, Bottom: 3 mm, Side: 3 mm  
Roll paper (borderless): Top: 20 mm, Bottom: 0 mm, Side: 0 mm  
Cut sheet: Top: 3 mm, Bottom: 20 mm, Side: 3 mm  
Manually switchable by user  
N/A  
(Printable) 203.2-610mm  
\*Roll paper only \* No size restriction  
Standard position: 1 sheet

## Media Feed Capacity

## Media Take-up roll unit

## Borderless Printing Width (Roll Only)

## Maximum number of delivered prints

## DIMENSIONS AND WEIGHT

### Physical Dimensions WxDxH (mm) and Weight (Kg)

982 x 748 x 438 mm  
37 kg (including Roll Holder Set, excluding ink and print head)

### Packaged Dimensions WxDxH (mm) and Weight (Kg)

Printer (Main unit with pallet) 1147 x 874 x 542 mm  
49 kg

## POWER AND OPERATING REQUIREMENTS

### Power Supply

AC 100-240V (50-60Hz)

### Power Consumption

Operation: 52 W or less  
Sleep mode: 3.6W or less  
Default setting for the time to enter the Sleep mode: approx. 5 mins  
Power off: 0.3 W or less

### Operating Environment

Temperature: 15-30°C, Humidity: 10-80% RH (no dew condensation)

### Acoustic Noise (Power/Pressure)

Operation: 42 dB (A) (Plain paper, line drawing, standard mode)  
Standby: 35 dB (A) or less  
Operation: 5.8 Bels (Plain paper, line drawing, standard mode) (Measured on ISO 7779 standard and described based on ISO9296 standard)

### Regulations

Europe: CE mark, Russia: EAC,

### Certificates

TUV, CB

## WHAT'S INCLUDED

### What's in the Box?

Printer, 1 print head, Power Cabel, 1 set of starter ink tanks, Set up guide, Quick Guide, Safety/Standard Environment leaflet, User Software CD-ROM (Win), EU Biocide Sheet, Eurasian Economic Union Sheet, Important Information Sheet

### Software Included

imagePROGRAF TA- Unified Printer Driver, Other software available as Download from Web.

## OPTIONS

### Optional Items

2/3" Roll Holder: RH2-28

## CONSUMABLES

### User Replaceable Items

Ink Tank: PFI-030 (55ml)  
Print Head: PF-06  
Cutter Blade: CT-08  
Maintenance Cartridge: MC-31

## Disclaimer

Some images are simulated for clarity of reproduction. All data is based on Canon's standard testing methods. This leaflet and the specifications of the product have been developed prior to the date of product launch. Final specifications are subject to change without notice.™ and ®: All company and/or product names are trademarks and/or registered trademarks of their respective manufacturers in their markets and/or countries.

Canon recommends you use Canon Media for the best results. Please check media (paper) compatibility list to see which variety of paper/media is recommended.



Canon Inc.  
canon.com

Canon Europe  
canon-europe.com

English edition  
© Canon Europa N.V., 2019