

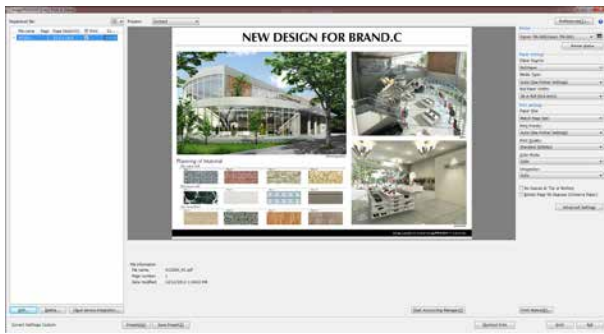
HOW TO MANAGE YOUR PRINTING COSTS

Canon's imagePROGRAF™ Series of multifunction and single function large format printers offer a range of tools to help you easily manage printing costs and boost productivity across your entire fleet.

DIRECT PRINT & SHARE

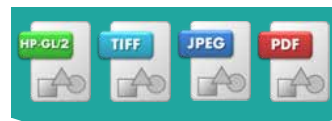


Direct Print & Share (DPS) is a job submission tool, which provides efficient large format printing workflow solutions.



You can preview and batch print multiple files of different types such as PDF, JPEG and TIFF without starting up the dedicated applications. Saved files can be also uploaded to cloud storage and shared among remote locations or across multiple sites.

DRAG & DROP



You can streamline your printing with DPS, simply by dragging and dropping files.

iPF Direct Print & Share

Pre register settings:

- Output printer
- Print quality
- Paper type
- Paper size

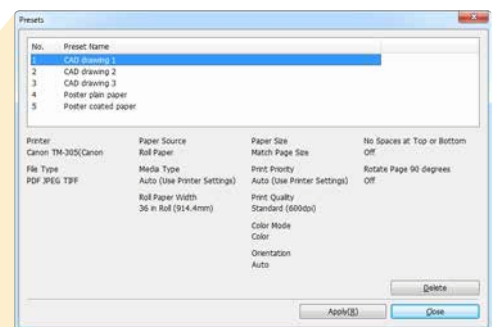
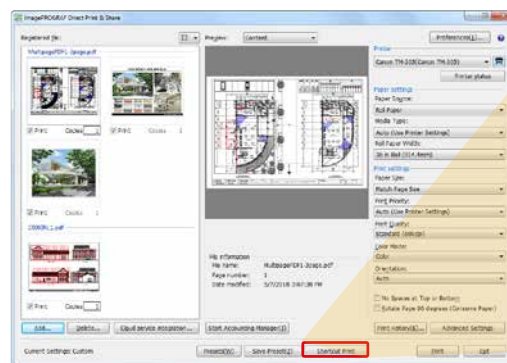


REGISTER AND APPLY PRINT SETTINGS

NEW

You can easily register print settings, then quickly apply them as needed before printing.

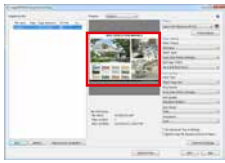
This eliminates the effort of configuring settings for every job, prevents setting errors and helps you standardise your print processing.



LARGER PREVIEW WITH MAXIMISED WINDOW



You can see print previews at a larger size on the screen to enhance usability and efficiency.



Current DPS: Fixed size

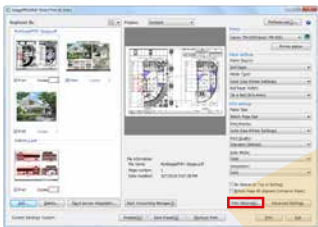


New DPS: Maximized window

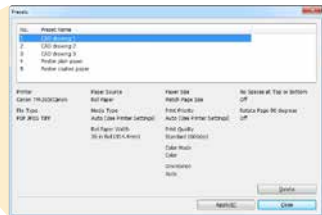
AUTOMATIC REPRINTS



You can automatically save your print history, then easily print jobs again from the log using identical settings.



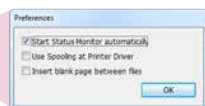
Print History(K)...



INK AND MAINTENANCE CARTRIDGE MANAGEMENT



You can easily check printer status and ink levels before printing, as well as the current roll and maintenance cartridge capacity – helping you to plan ahead and avoid unnecessary downtime at peak periods. The status monitor starts and exits automatically when DPS is started/stopped.



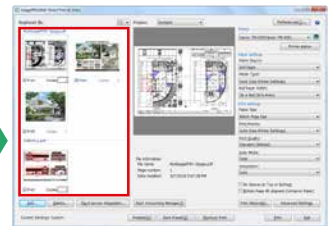
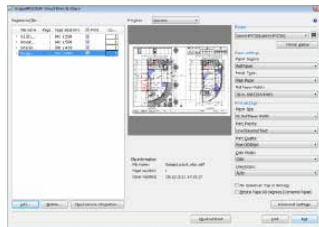
Automatic startup and exit of Status Monitor



THUMBNAIL PREVIEWS OF MULTIPLE PRINT JOBS



Thumbnail previews allow you to quickly check the content of all pages in a file that's registered in DPS, before printing. You can easily switch between text information about files to thumbnails, as required. For multiple print jobs, separators between files make it clear where each file ends and the next begins.



ACCOUNTING MANAGER



Accounting Manager helps you control your print costs with centralised management of multiple LFPs. It effortlessly collects printer job logs and calculates the printing costs for each print job, department or user, or for a certain period of time, depending on your requirements.



Job ID	User	Printer	Pages	Cost	Time	Color	Resolution	Scale	Print Date	Print Time
1001	John.Doe	ImagePROGRAF 450	10	0.50	15:30	Color	1200	100%	2018-01-15	15:30:00
1002	Jane.Smith	ImagePROGRAF 450	5	0.25	16:00	Color	1200	100%	2018-01-15	16:00:00
1003	Bob.White	ImagePROGRAF 450	20	1.00	17:00	Color	1200	100%	2018-01-15	17:00:00

CSV file



Features include:

- Email notification of accounting information
- CSV file output
- Printing costs for each print job, department or user
- Supports Windows and Mac

Canon

Canon Europe
canon-europe.com

English Edition
© Canon Europa N.V., 2018