

## HOW TO EFFICIENTLY USE YOUR imagePROGRAF™ SERIES PRINTER

Canon's imagePROGRAF™ Series of multifunction and single function large format printers are quick and easy to operate thanks to a range of user-friendly features:

### INTUITIVE OPERATION PANEL



Anyone – even a complete beginner – can easily operate the printer using the **3-inch colour touchscreen**.

Often-used functions on top-level screen

Color screen with ample icons



### 300ML OR 130ML HOT-SWAP INK TANKS



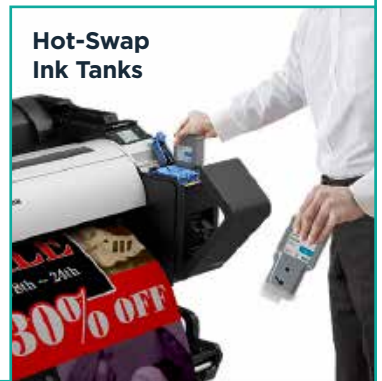
You can choose the size of ink tank you need, combine them any way you like for maximum flexibility and replace them during printing to reduce downtime.

300ML

130ML



Hot-Swap Ink Tanks



### HIGH QUALITY PRINTING



You can enjoy sharp reproduction of text and lines even on uncoated paper thanks to Lucia TD inks.

Current MBK

LUCIA TD MBK



Low

Surface tension

High

Feathering often occurs

Less feathering

You can easily check printed images and output size while printing.

### A CLEAR DESIGN

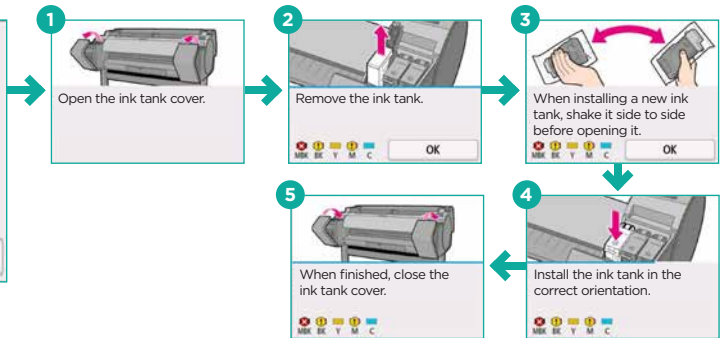
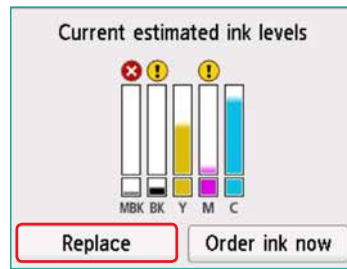


# EASY INK TANK REPLACEMENT



Sub-ink tanks ensure you always have some ink in reserve.

A visual display shows you how much ink is remaining in both the main and sub tanks – so you only replace the inks you need.

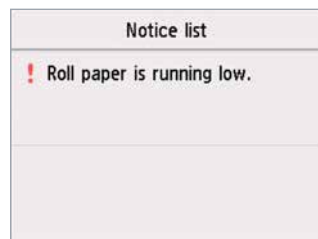


# SIMPLE PAPER MANAGEMENT

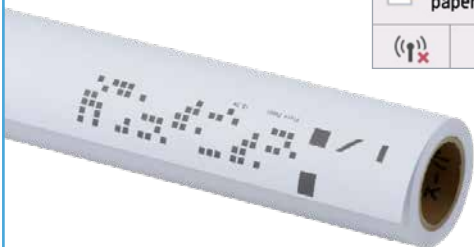
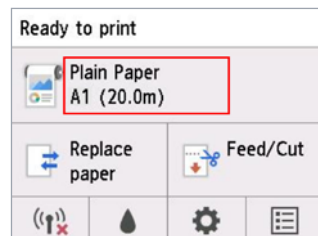


The TM series offers **2 ways** to manage remaining paper:

**1** A warning on the display panel quickly and **easily estimates** the amount of paper left, without the need to print or scan barcodes.



**2** Print barcodes enable **exact detection** of paper type and amount remaining.



# SPACE SAVING DESIGN WITH CONVENIENT FRONT ACCESS



You can install your compact printer flush against a wall and conveniently replace ink, load paper, remove output and clear jams from the front of the device.

# EASY ROLL LOADING



Roll loading is designed for ease and comfort. You simply set the roll on top of the printer, toward the front, then slide it into position along handy guide rails. The printer automatically determines whether a roll or sheet is loaded.

**1** Temporarily set the roll on top



**2** Simply slide the roll along guide rails



70mm closer

The pre-loading position is 70 mm closer to the front than on current models, making it more comfortable to reach from the front without bending.



Canon Europe  
canon-europe.com

English Edition  
© Canon Europa N.V., 2018